



2115 South Dallin Street
Salt Lake City, UT 84109
CRESUTAH.COM

East Side Sugarhouse Stand Alone Office Building For Lease or Sale



- Lease Rate: \$26.00 NNN
- Sale Price: Contact Agent for Pricing
- Two (2) Level Office Building
- Size: 5,734 Sq. Ft. on Two (2) Floors
- Tenancy: Single or Multi-Tenant Opportunity
- Lot Size: 0.27 AC
- Year Built: 1965, Renovated 2013 & 2020
- Furniture Available
- Google Fiber & Comcast Internet Service
- Parking: 12 Dedicated Parking - 2.09 Per 1,000
- Surveillance System Throughout Interior and Exterior
- Lighted Sign

DO NOT DISTURB TENANTS
SHOWN BY APPOINTMENT ONLY

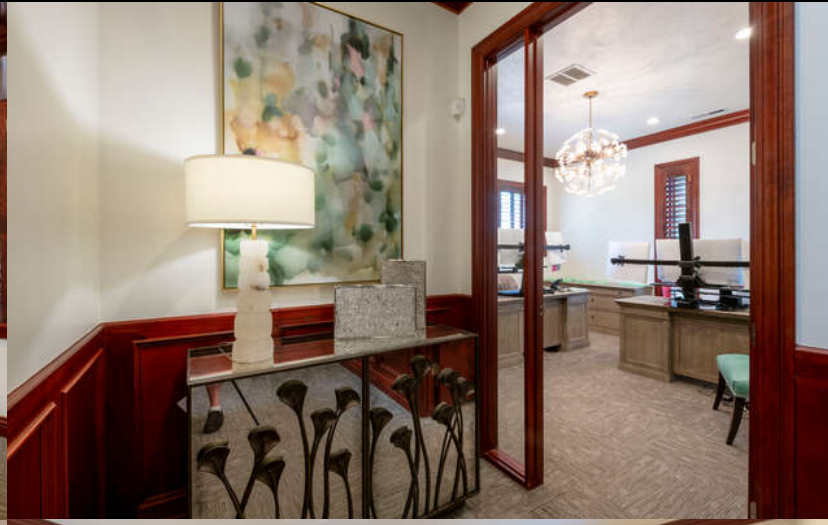


2040 E. Murray Holladay Road
Suite 310
Holladay, UT
801.876.6070
CRESUTAH.COM

Justin Welch
Principal Broker
Cell 801.718.8842
Office 801.876.6071
justin@cresutah.com

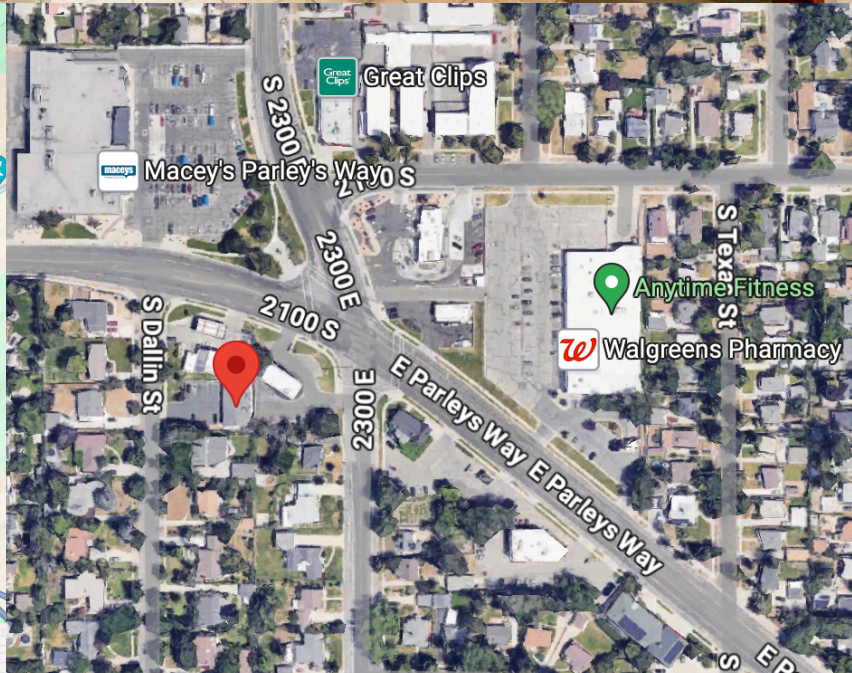
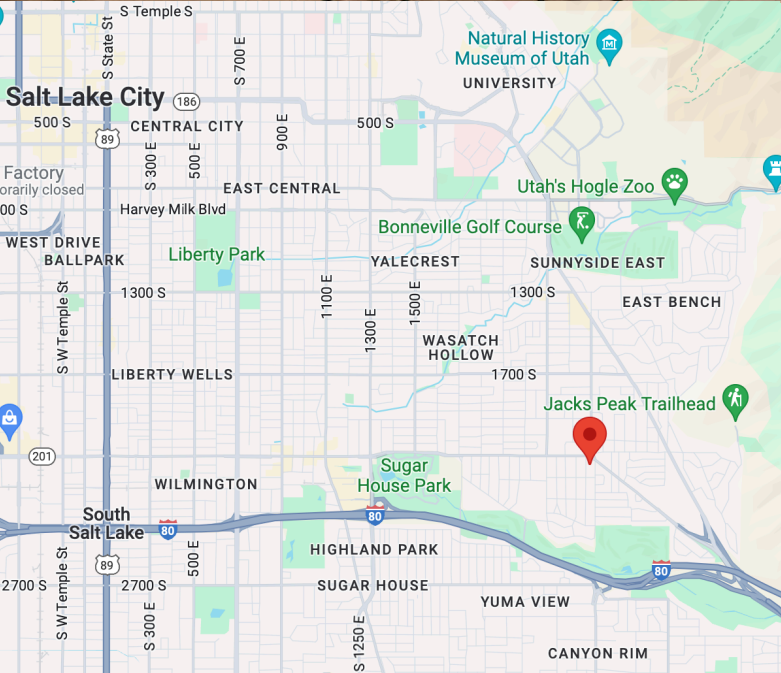


- Second Floor:
 - Five (5) Private Offices
 - One (1) Conference Room
 - Two (2) Restrooms
 - Formal Reception Area with Two (2) Work Stations
 - Cubicle Area / Two Work Stations
 - Break room / Kitchenette
 - Copy Room / Work Room
- First Floor:
 - Four (4) Private Offices
 - Large Open Work Space / Cubicle Area
 - Two (2) Restrooms
 - Oversized Storage Room
- Construction: Block
- Zoning: CB (Commercial District)
- Class A Finishes
- Washer & Dryer
- Private Shower
- Backup Generator
- Ample Parking
- Numerous Walkable Food, Service and Hospitality Amenities
- Close Proximity to Sugarhouse Park
- Immediate Access to I-80 & I-215
- Parcel Number: 16-22-131-002-0000



**2040 E. Murray Holladay Road
Suite 310
Holladay, UT
801.876.6070
CRESUTAH.COM**

**Justin Welch
Principal Broker
Cell 801.718.8842
Office 801.876.6071
justin@cresutah.com**



**2040 E. Murray Holladay Road
Suite 310
Holladay, UT
801.876.6070
CRESUTAH.COM**

**Justin Welch
Principal Broker
Cell 801.718.8842
Office 801.876.6071
justin@cresutah.com**