

OFFICE FOR SUB-LEASE



Plug & Play Short Term Sub-Lease Available

- Available: 1,600 Sq. Ft.
- Lease Rate: \$22.66 PSF
- LED: 3/20/2025
- Furniture Available
- Two (2) Huge Offices, Large Conference Room, Eight (8) Work Stations, private bathroom, Nice Reception Area with Desk
- Top Floor Office Suite
- Tons of Natural Light
- Zoning: Commercial (C-1)
- 3,000/1,000 SF Parking Ratio
- Year Built: 1989
- Within close proximity to I-215 freeway and Union Park Office & Retail Centers. The office building is within walking distance of many restaurants, cottonwood mall redevelopment, Coffee, grocery stores and many other



2040 E. Murray Holladay Road, Ste. 310

Holladay, UT 84117

801.876.6070

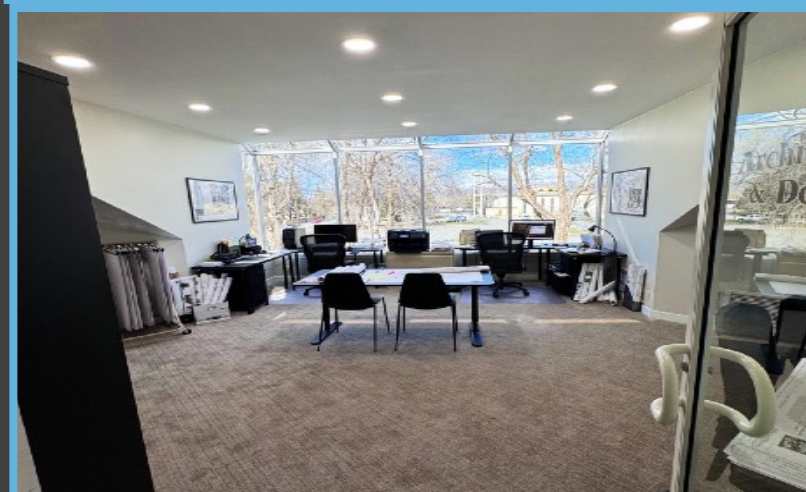
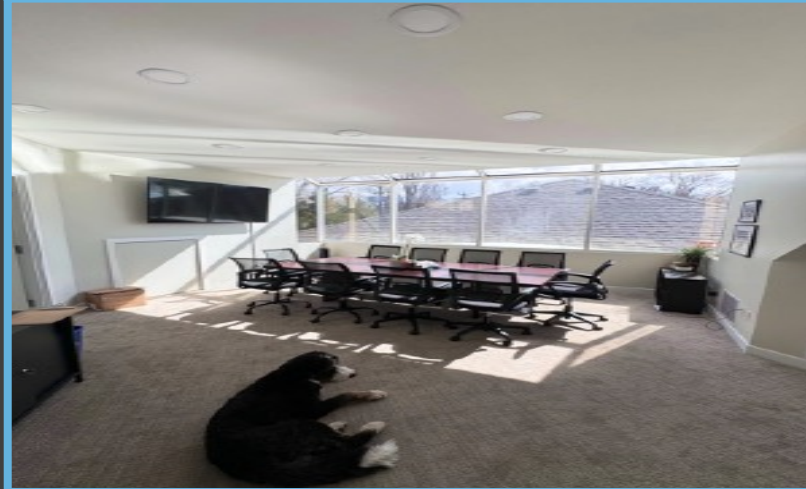
Justin Welch
Principal Broker
Cell 801.718.8842
Office 801.876.6071
justin@cresutah.com



5445 S. Highland Dr. Suite 200

Holladay, UT 84117

CRESUTAH.COM



2040 E. Murray Holladay Road, Ste. 310

Holladay, UT 84117

801.876.6070

Justin Welch
Principal Broker
Cell 801.718.8842
Office 801.876.6071
justin@cresutah.com