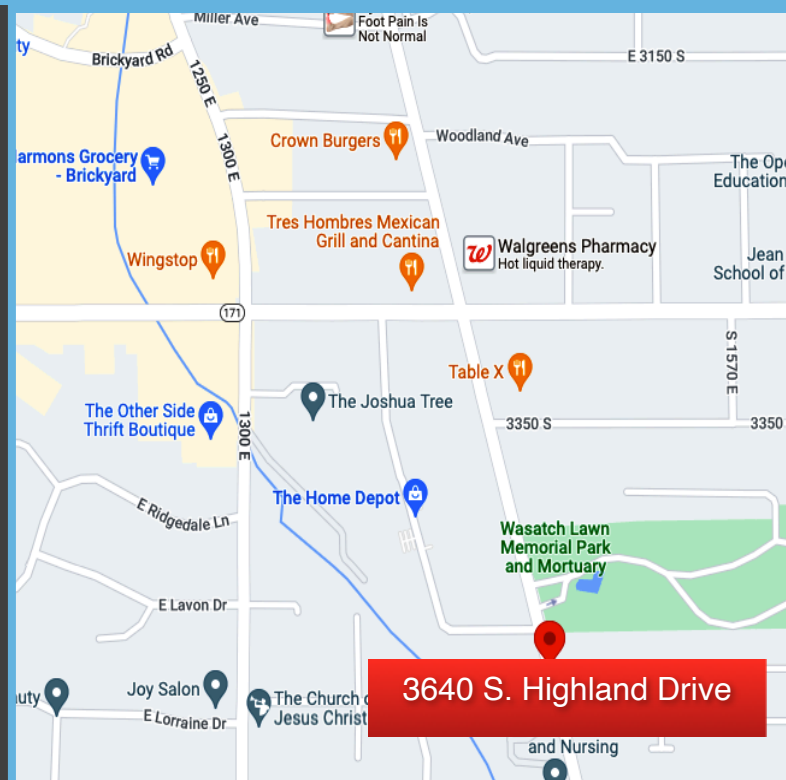


Retail Space Available for Lease



- Available For Lease
- Available: 3,000 Sq. Ft.
- Call Agent for Pricing
- Signage Available
- 12' Clearance
- 100 Parking Stalls - 6.19/1,000 SF Parking Ratio
- Ideal for Hair salon or Nail Salon
- Four (4) Nail Stations with Venting
- Two (2) Bathrooms
- Washer & Dryer Hookups
- Size: 2.18 Acres
- Zoning: Commercial (CC)
- Year Built: 1985 Year / Renovated: 2006
- Strong Traffic Counts Highland Drive (22,400)
- Established Retail & Residential Trade Area



2040 E. Murray Holladay Road, Ste. 310

Holladay, UT 84117

801.876.6070

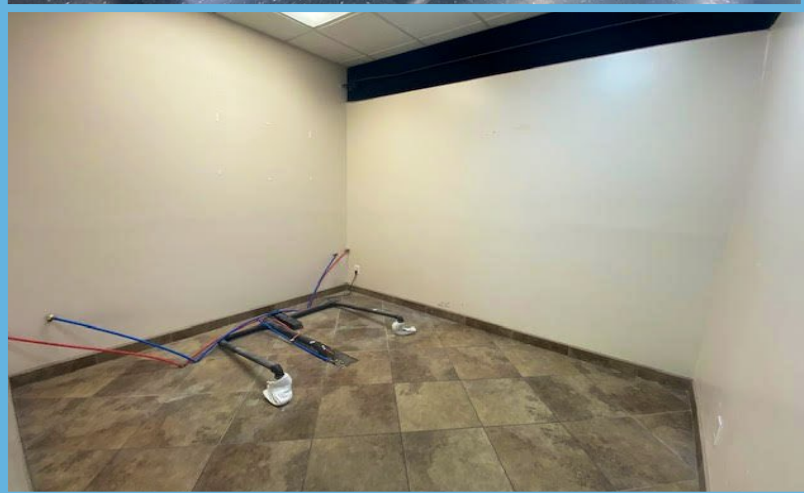
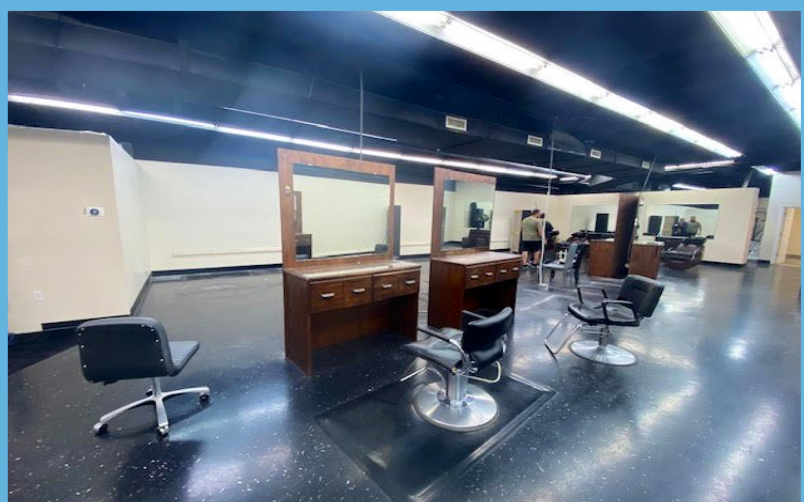
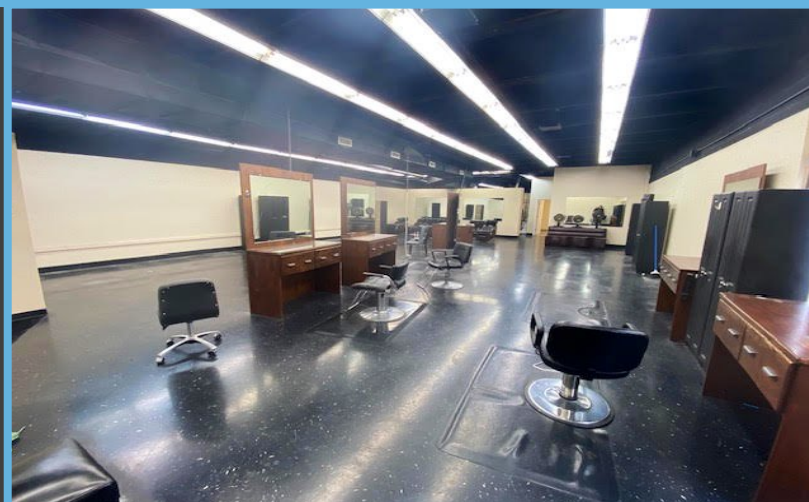
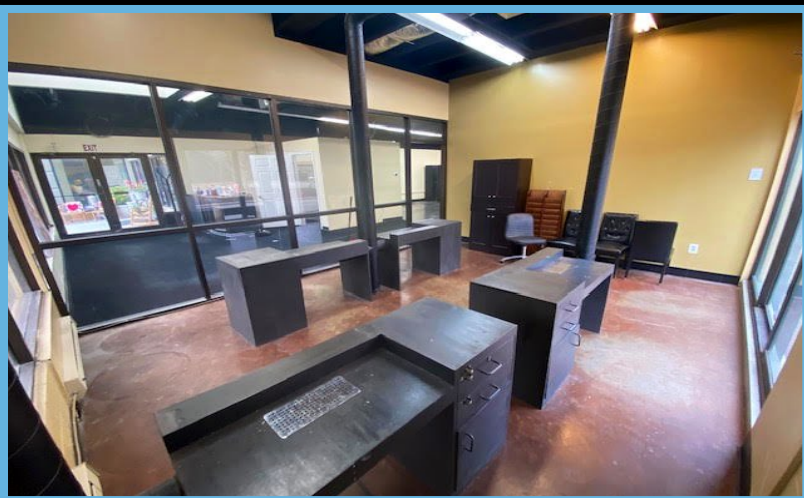
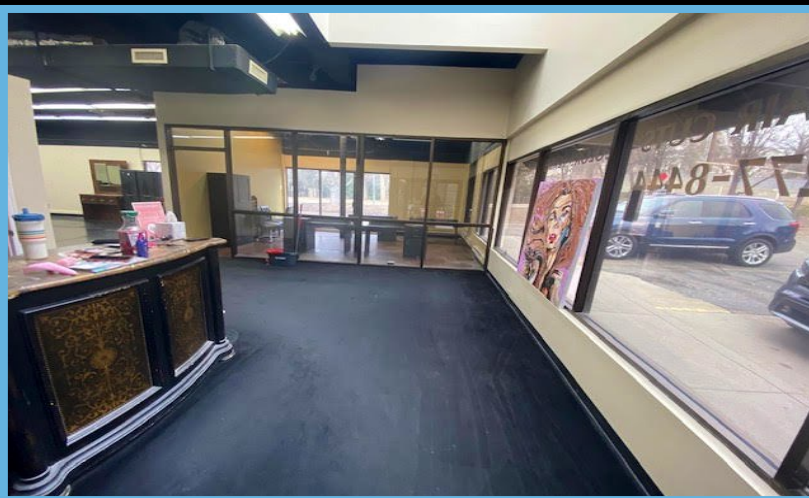
Justin Welch
Principal Broker
Cell 801.718.8842
Office 801.876.6071
justin@cresutah.com



3640 South Highland Drive

Salt Lake City, Utah 84106

CRESUTAH.COM



2040 E. Murray Holladay Road, Ste. 310
Holladay, UT 84117
801.876.6070

Justin Welch
Principal Broker
Cell 801.718.8842
Office 801.876.6071
justin@cresutah.com