

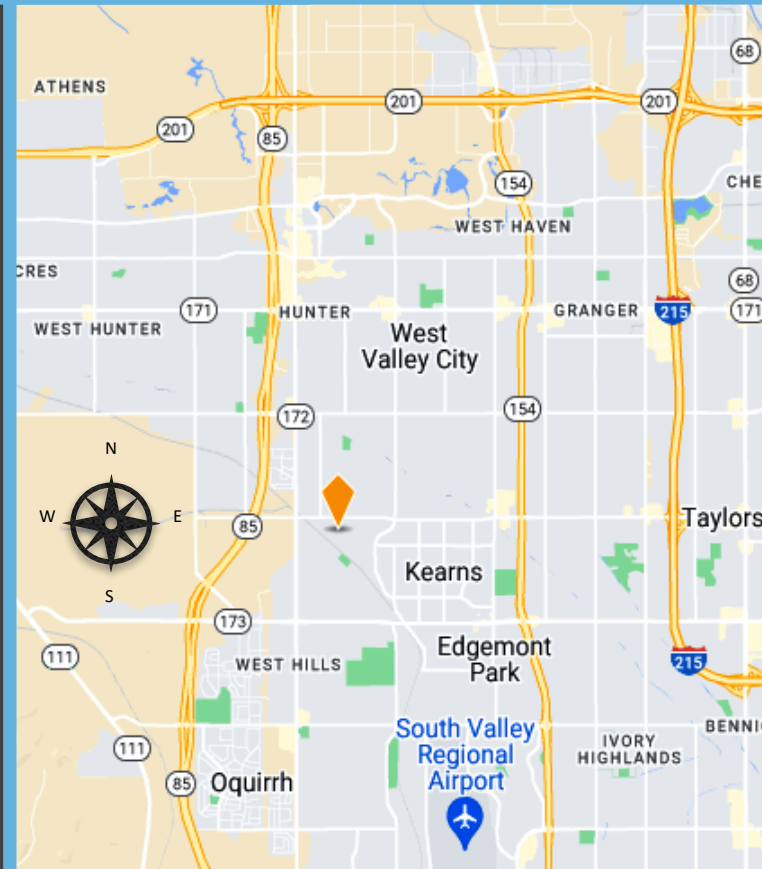
Kearns Warehouse with Yard for Lease

Lease Rate: \$0.95 - 1.10 / PSF NNN

NNN: \$0.15/PSF



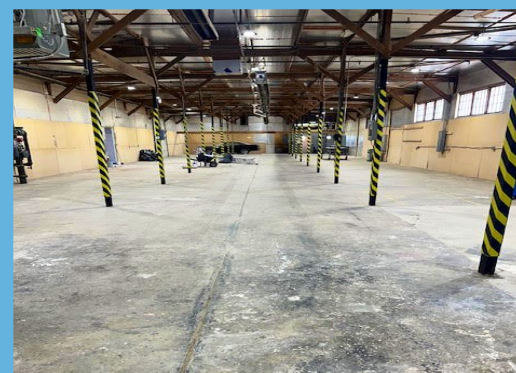
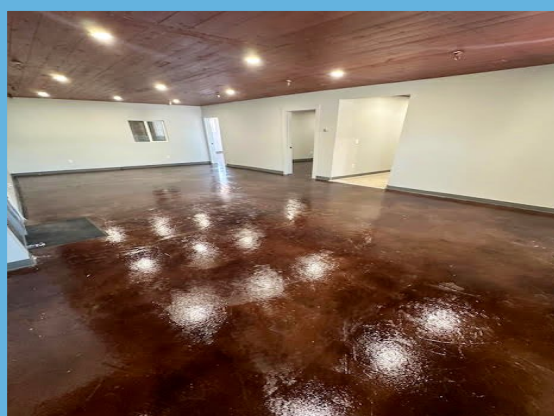
- 9,700 Sq. Ft. Freestanding Warehouse
- Divisible to approx. 4,600 Sq. Ft.
- Fenced Yard Area
- Two (2) 12' x 12' Ground Level Doors
- Large Office/Showroom Space: Approx. 2,000 Sq. Ft. - 434 Sq. Ft. Storage Plus Mezz storage above office
- 16' Clearance
- Power: 3 Phase 480 Volts
- Fire Sprinkled
- Radiant Heat
- Year Built: 1945 / Year Renovated: 2023
- Excellent location in New Camp Kearns Industrial Park
- Easy Access to Mountain View Corridor, Bangerter Hwy and Bacchus Hwy



2040 E. Murray Holladay Road
Suite 310
Holladay, UT
801.876.6070
CRESUTAH.COM

Justin Welch
Principal Broker
Cell 801.718.8842
Office 801.876.6071
justin@cresutah.com

Chris Lorenzon
Specialist
Office 801.876.6087
Cell 801.652.2798
chris@cresutah.com



This information is deemed reliable, but is not guaranteed. Tenant to verify all.

2040 E. Murray Holladay Road
Suite 310
Holladay, UT
801.876.6070
CRESUTAH.COM

Justin Welch
Principal Broker
Cell 801.718.8842
Office 801.876.6071
justin@cresutah.com

Chris Lorenzon
Specialist
Office 801.876.6087
Cell 801.652.2798
chris@cresutah.com